

SPA-REM7 Front

3005010177

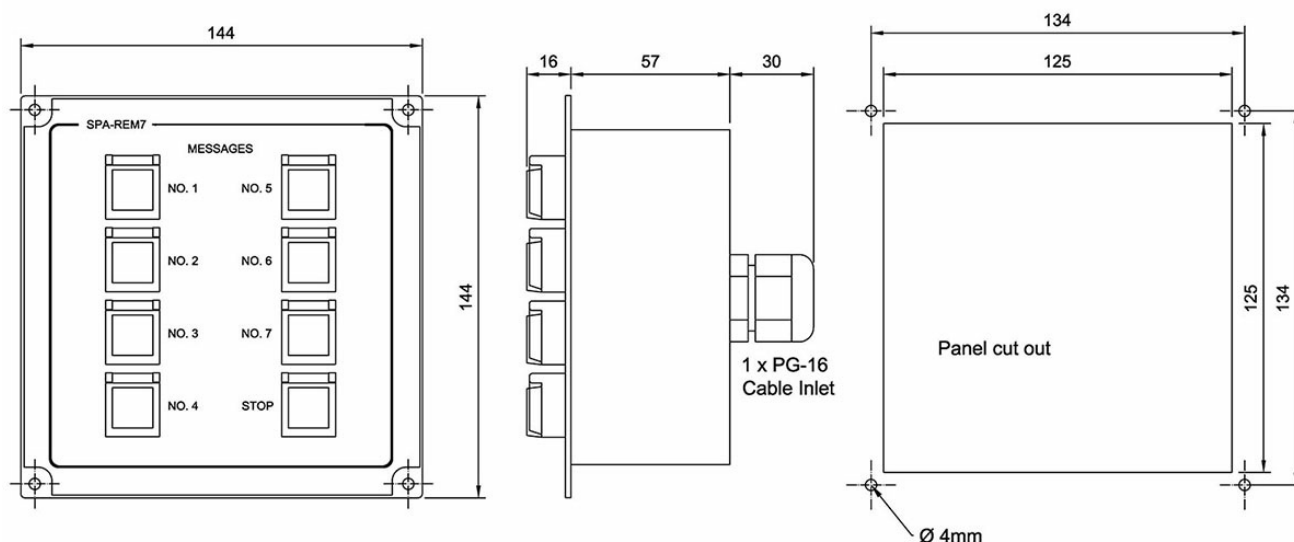
# SPA-REM7

Remote panel w/ 7 start &amp; 1 stop button

## Description

- ✓ Message play panel
- ✓ Seven start buttons for play message
- ✓ One message stop button

## Technical Dimensions



# Specifications

## GENERAL

Size receiver (WxHxD)	144 x 144 x 57 mm
Weight	0.4 kg
Mounting	Flush
IP rating	IP-22
Environmental Condition	Protected

## Used With



### MR1301

Digital Audio  
Recorder/Player