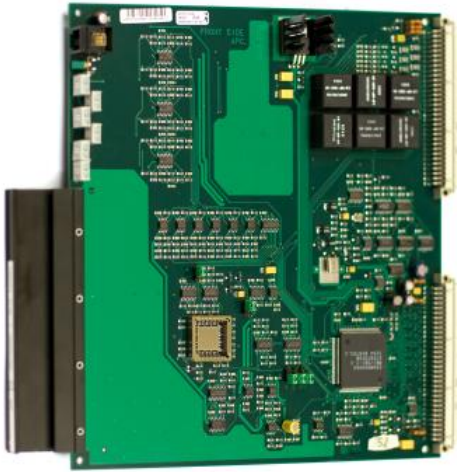


1009301010

APC

AlphaCom Program & Clock Board with Microcontroller



Description

- ✓ Equipped with microcontroller for High Availability Audio Server
- ✓ System master clock (two-phase - 16.384 MHz) and module reset
- ✓ Circuitry for 6 audio program feed channels
- ✓ Can be fed by any analog source
- ✓ Galvanic isolated input via 600 ohm transformer to avoid noise problems
- ✓ Adjustable sensitivity (gain)
- ✓ 6 alarm inputs
- ✓ 2 internal alarms
- ✓ Fan control
- ✓ Coded connector to ensure correct positioning in the module
- ✓ Power connector (6-pin socket source) for hot plug-in cable
- ✓ Reset button in front

The AlphaCom exchange needs this board to run. It controls the back plane board clocking. It also supervises board temperatures and controls the speed of the fans.

This board contains circuitry for 6 audio program feed channels with galvanic isolation. Easily accessible potentiometers at the front enable sensitivity control of the audio program input. The clock can be synchronized with (phase-locked to) an external clock.

The board plugs into position 26 only. In order to connect external program sources, a separate APC connection kit is required.

See also: [additional documentation on wiki.zenitel.com](https://wiki.zenitel.com)

Specifications

GENERAL

Operation Voltage	5, 15, 24 VDC
Dimensions (WxHxD)	10 mm x 230 mm x 263 mm, 0.39" x 8.97" x 10.26" Double Extended Europe Format
Sensitivity (adjustable)	100 mV to 1 V
Frequency range with program feed	200 - 15,000 Hz
Indicator	Drives module status indicator on front panel

ORDER NUMBER	DESCRIPTION	SHIP WEIGHT
1009301000	Program & Clock Board APC	0.5 kg / 1.1 lbs.
1009503000	APC Connection Kit	0.3 kg / 0.66 lbs.