



4000014737

## TWIN-EEExII-A

EX Telephone Alarm Sounder/Strobe Beacon, 230VAC, Amber



IP66



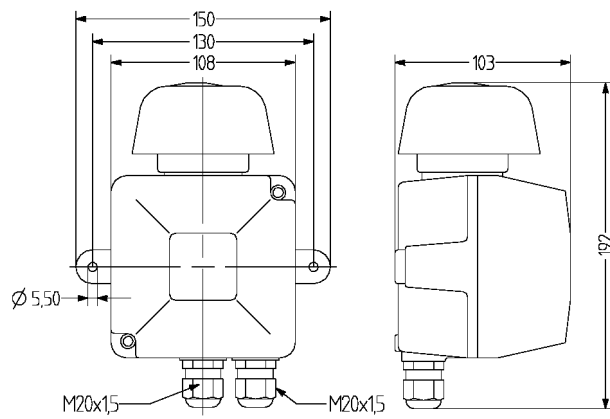
Atex

## Description

- ✓ For universal industrial use
- ✓ II 2 G Ex e mb [ib] IIC T6/T5/T4 Gb
- ✓ Protection class IP 66 according to EN 60529
- ✓ Explosion-proof, optical-acoustic signalling unit
- ✓ High-volume multitone alarm
- ✓ Powerful strobe light
- ✓ 230 VAC power supply

The TWIN-EEExII is a compact unit comprising power supply, telephone connection, strobe light, amplifier and loudspeaker. The bottom box is made of seawater-resistant cast aluminium coated with plastic. The loudspeaker consists of impact and cold-resistant plastic and is permanently mounted to the housing. The strobe light cap made of polycarbonat forms the housing cover.

## Technical Dimensions



# Specifications

## GENERAL

Type of ignition protection	≤ 60 min at Ta +60°C; ≤ 15 min at 60 Hz (30 min pause)
Visual signal transmitter	2 flashtubes with 1J
Mains connection	230 VAC -15% +10%, 50/60 Hz
Telephone connection	30 VAC - 75 VAC; 23-54 Hz 0-63 VDC
Housing	Die-cast aluminium grey
Type of mounting	vertical
Cable entry	2x cable glands M20 x 1.5 6–12 mm (main circuit); 5–10 mm (telephone circuit)
Connection technology	up to 1.5 mm² single or fine wire
Strobe/flash frequency	1-2 Hz
Tone	3 Tones, One tone, Two tones or Three tones Can be adjusted with DIP switch
Duty cycle	≤ 60 min at Ta +60°C; ≤ 15 min at 60 Hz (30 min pause)
Operating temperature	-20 °C/+60 °C
Degree of protection	IP66
Weight	1,42 kg
Audible signal transmitter	Loudspeaker
Tone ringing volume	90 dB

## OTHER MODELS

4000014737	TWIN-EEExII-A EX Alarm Sounder and Strobe Beacon, 230VAC, Amber
4000017327	TWIN-EEExII-B EX Alarm Sounder and Strobe Beacon, 230VAC, Blue