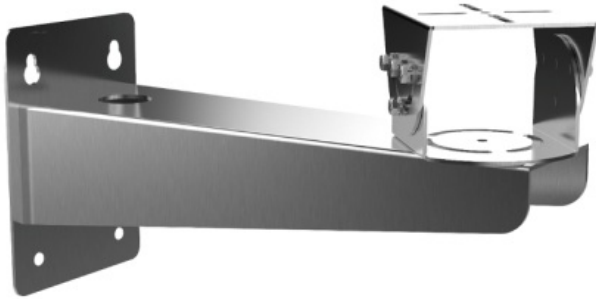


2310111122

## DS-1701ZJ bracket

Anti-Corrosion Wall Mounting Bracket for Box Camera



- ✓ Stainless steel material
- ✓ Anti-corrosion design
- ✓ Design of cap is for convenient wiring

---

### Description

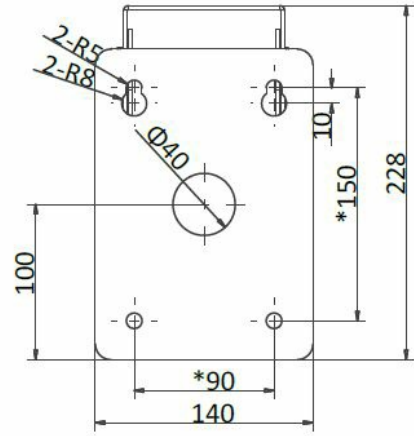
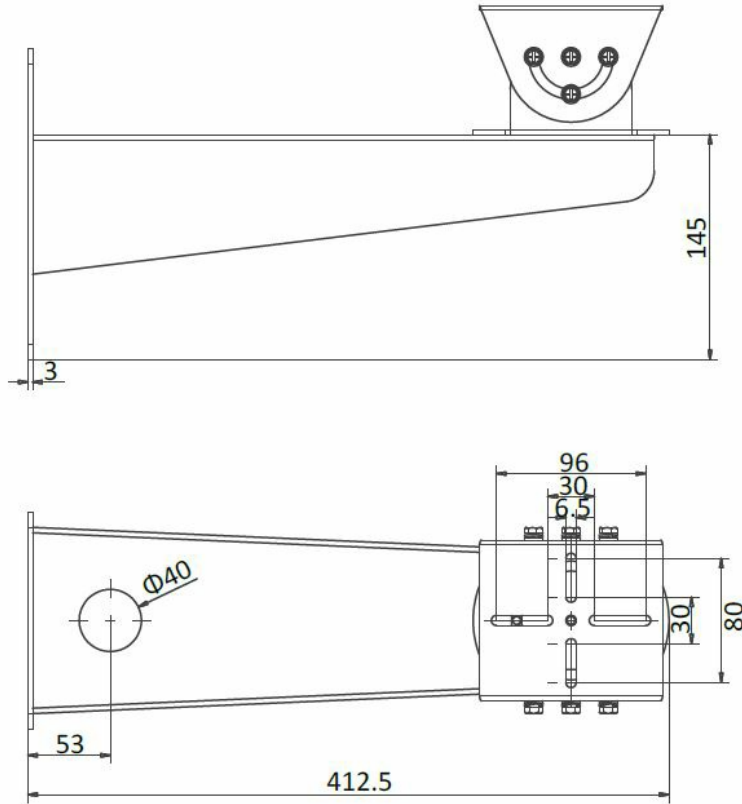
Wall mount bracket in stainless steel for box cameras

### Notes

- ✓ The bracket should be installed on flat wall.
- ✓ The wall must be capable of supporting over 3 times as much as the total weight of the camera and the mount.
- ✓ The maximum load capacity of the bracket is 20KG.

### Technical Dimensions

## Dimension



# Specifications

## DETAILS

Model: DS-1701ZJ
Parameters: Anti-Corrosion Wall Mounting Bracket for Box Camera
Appearance: Unpainted Stainless Steel
Material: Stainless Steel
Dimension: 228x140x412.5mm
Weight: 3800g

## Used With



### DS-2TD2466-25Y thermal camera

Thermal imaging IP Camera